

# BP4 Rinse only

## Operating Instructions

### Programme options

- 1 Tap (7½ mins)
- 2 Tap (10 mins)
- 1 Tap Special (14 mins)
- 2 Tap Special (16 mins)
- Flush Only (2½ mins)

In the event of an error message appearing on your tablet or machine check the following:

- The coupling is connected to the Beer Piper ring main
- The drainage pipe is free of kinks
- The beer tap is open
- The sparkler has been removed from the tap
- The gas and assist pump are turned off

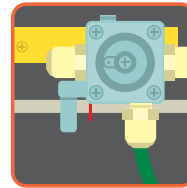
Our customers may obtain Beer Piper Clear or Beer Piper Purple beer line cleaning fluid from us at a preferential price.

You can order via our website [beerpiper.co.uk](http://beerpiper.co.uk) or by calling us on freephone **0300 303 2709**

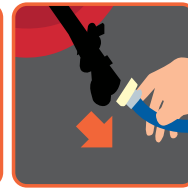


[beerpiper.co.uk](http://beerpiper.co.uk)

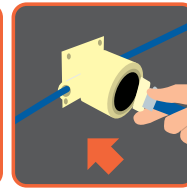
### Prep in the Cellar



**TURN OFF** Gas

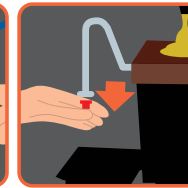


**REMOVE** coupling and any filter washer

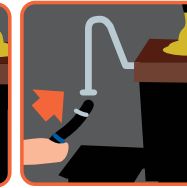


**CONNECT** coupling to BP Ringmain using plain washer

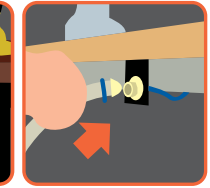
### At the Bar



**REMOVE** sparkler if fitted

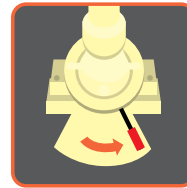


**CONNECT** Waste to Tap

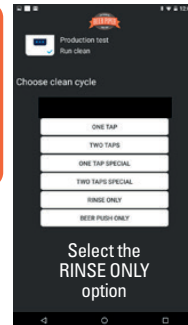


**PLUG-IN** Waste

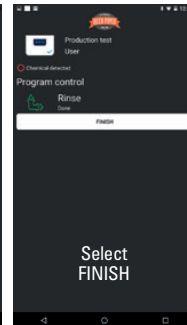
### At the Bar - continued



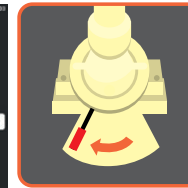
**OPEN** Check Valve to 'Clean'



Select the **RINSE ONLY** option

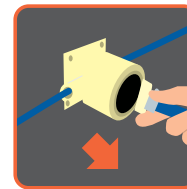


Select **FINISH**

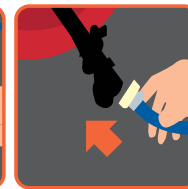


**CLOSE** Check Valve to 'Normal'

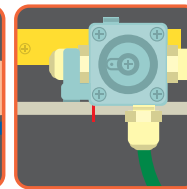
### Back in the Cellar



**DISCONNECT** from BP Ringmain, store plain washer



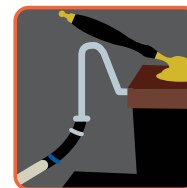
**RECONNECT** coupling with filter washer



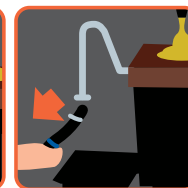
**TURN ON** Gas

Your Beer Piper system can be controlled using the wireless tablet provided or via the front panel control on the machine. We recommend using just the tablet to rinse your lines.

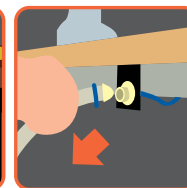
### Finishing up at the Bar



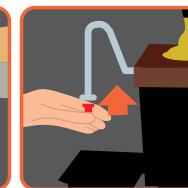
**OPEN** Tap until beer appears



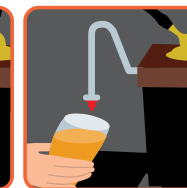
**DISCONNECT** Waste from Tap



**UNPLUG** Waste and rinse pipe



**REPLACE** sparkler



Serve beer

