

BP4 Cask Line Cleaning Operating Instructions Pt 1

Programme options

- 1 Tap (7½ mins)
- 2 Tap (10 mins)
- 1 Tap Special (14 mins)
- 2 Tap Special (16 mins)
- Flush Only (2½ mins)

Your Beer Piper system can be controlled using the wireless tablet provided or via the front panel control on the machine.

We recommend using the front panel to start the process while in the cellar and the tablet when in the bar.

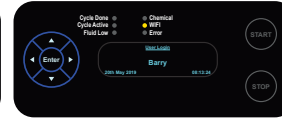
Our customers may obtain Beer Piper Clear or Beer Piper Purple beer line cleaning fluid from us at a preferential price.

You can order via our website beerpiper.co.uk or by calling us on freephone **0300 303 2709**

Prep in the Cellar



On the **MAIN MENU** screen **SELECT** the **CLEAN ICON**



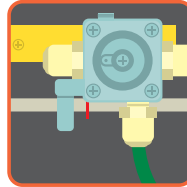
Scroll down to **SELECT** the **USER** then **PRESS ENTER**



SCROLL Left/Right to **SELECT** THE **LINE NUMBER & PRESS ENTER**. Repeat for additional lines then **PRESS START**



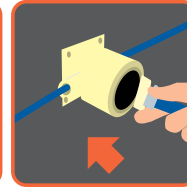
SCROLL Left/Right to **SELECT** THE **CLEANING PROGRAM & PRESS ENTER**



TURN OFF Gas



REMOVE coupling and any filter washer

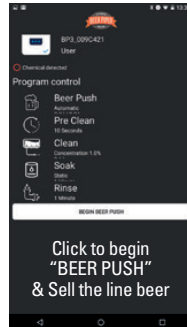


CONNECT coupling to BP Ringmain using plain washer

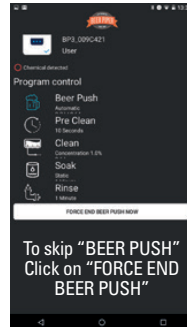


When program selected appears on screen **PRESS START**

At the Bar



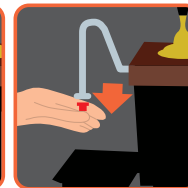
Click to begin "BEER PUSH" & Sell the line beer



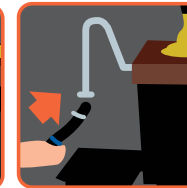
To skip "BEER PUSH" Click on "FORCE END BEER PUSH"



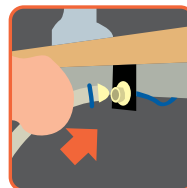
DISPENSE and sell line beer



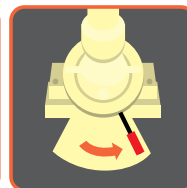
REMOVE sparkler if fitted



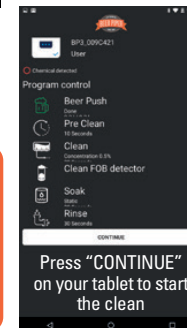
CONNECT Waste to Tap



PLUG-IN Waste



OPEN Check Valve to 'Clean'



Press "CONTINUE" on your tablet to start the clean

CAUTION
Always wear protective gloves and goggles when handling beer line cleaning fluid

BP4 Cask Line Cleaning Operating Instructions Pt 2

Programme options

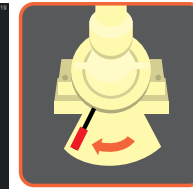
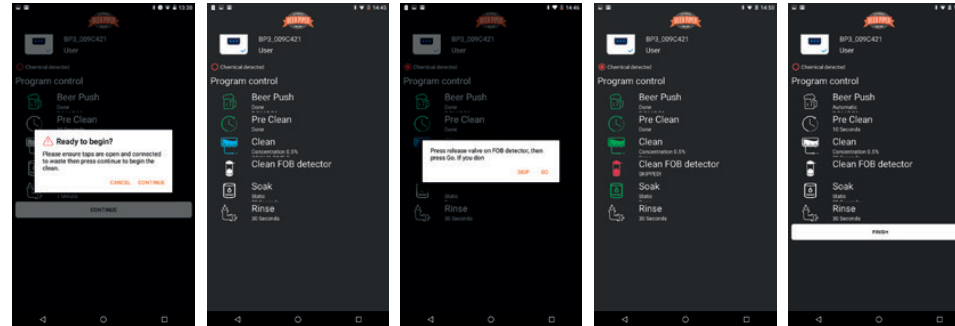
In the event of an error message appearing on your tablet or machine check the following:

- The coupling is connected to the Beer Piper ring main
- The drainage pipe is free of kinks
- The beer tap is open
- The sparkler has been removed from the tap
- The gas and assist pump are turned off

Our customers may obtain Beer Piper Clear or Beer Piper Purple beer line cleaning fluid from us at a preferential price.

You can order via our website beerpiper.co.uk or by calling us on freephone **0300 303 2709**

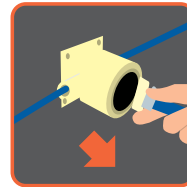
At the Bar - continued



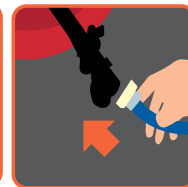
CLOSE Check Valve to 'Normal'

Your Tablet/Phone, will show you which stage your clean is at. During the clean you will be asked if you wish to also clean the Fob Tube.

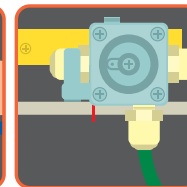
Back in the Cellar



DISCONNECT from BP Ringmain, store plain washer

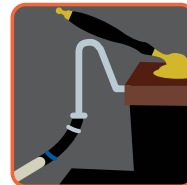


RECONNECT coupling with filter washer

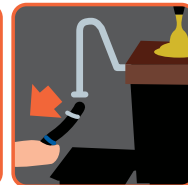


TURN ON Gas

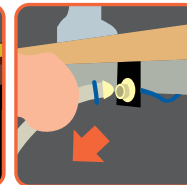
Finishing up at the Bar



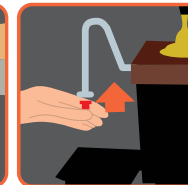
OPEN Tap until beer appears



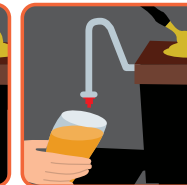
DISCONNECT Waste from Tap



UNPLUG Waste and rinse pipe



REPLACE sparkler



Serve beer

CAUTION

Always wear protective gloves and goggles when handling beer line cleaning fluid