

Cask Rinse only

Operating Instructions

In the event of a blocked line signal check that:

- The coupling is connected to the Beer Piper ring main
- The drainage pipe is free of kinks
- The beer tap is open
- The sparkler has been removed from the tap
- The gas and assist pump are turned off

Programme options

Default Clean (10 mins)
One Line Only (7½ mins)
Extended Clean (25 mins)

Selection

Multi tap (One Product)
Single tap (Inc Super Clean*)

* **Super Clean** does not increase programme time. It injects extra chemical and can be used with Multi tap or Extended Programmes.

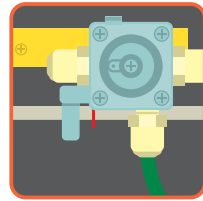
Our customers may obtain Beer Piper Clear or Beer Piper Purple beer line cleaning fluid from us at a preferential price.

You can order via our website beerpiper.co.uk or by calling us on reephone **0300 303 2709**

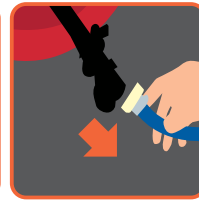
CAUTION

Always wear protective gloves and goggles when handling beer line cleaning fluid

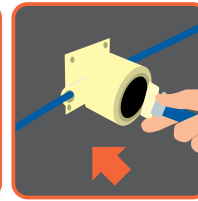
Prep in the Cellar



TURN OFF Gas

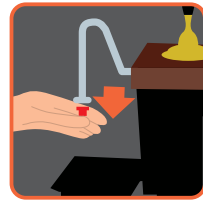


REMOVE coupling and any filter washer

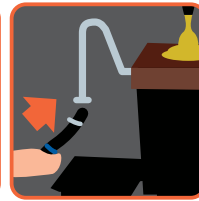


CONNECT coupling to the BP Ringmain using a plain washer

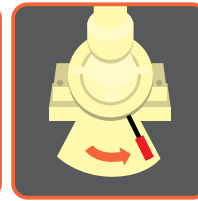
At the Bar



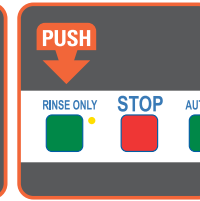
REMOVE sparkler if fitted



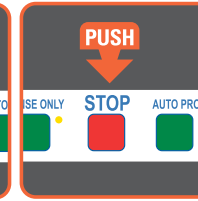
CONNECT waste pipe



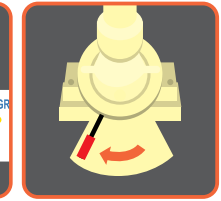
OPEN Check Valve to clean



PUSH RINSE ONLY and wait at least 1 minute

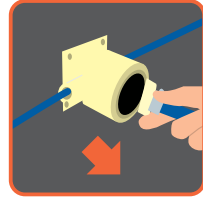


PUSH Stop

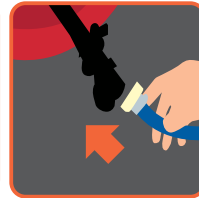


CLOSE Check Valve to 'Normal'

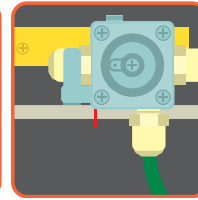
Back in the Cellar



DISCONNECT from BP Ringmain, store plain washer



RECONNECT coupling with filter washer



TURN On Gas

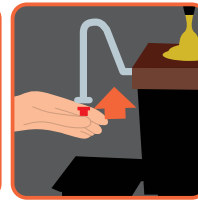
Finishing up at the Bar



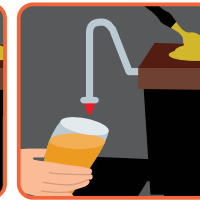
OPEN Tap until beer appears



DISCONNECT waste pipe



REPLACE sparkler



Serve beer

Cask Line Cleaning

Operating Instructions

In the event of a blocked line signal check that:

- The coupling is connected to the Beer Piper ring main
- The drainage pipe is free of kinks
- The beer tap is open
- The sparkler has been removed from the tap
- The gas and assist pump are turned off

Programme options

- Default Clean (10 mins)
- One Line Only (7½ mins)
- Extended Clean (25 mins)

Selection

- Multi tap (One Product)
- Single tap (Inc Super Clean*)

* **Super Clean** does not increase programme time. It injects extra chemical and can be used with Multi tap or Extended Programmes.

Our customers may obtain Beer Piper Clear or Beer Piper Purple beer line cleaning fluid from us at a preferential price.

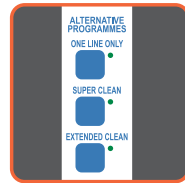
You can order via our website beerpiper.co.uk or by calling us on reephone **0300 303 2709**

CAUTION

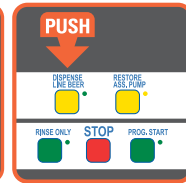
Always wear protective gloves and goggles when handling beer line cleaning fluid

beerpiper.co.uk

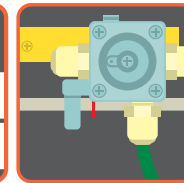
Prep in the Cellar



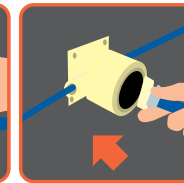
SELECT the cleaning programme required



TURN OFF Gas



REMOVE coupling and any filter washer

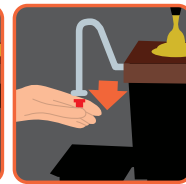


CONNECT coupling to the BP Ringmain using a plain washer

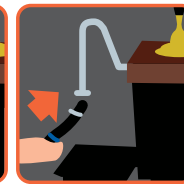
At the Bar



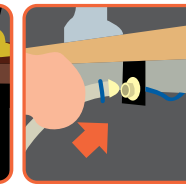
Sell line beer



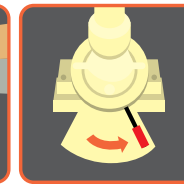
REMOVE sparkler if fitted



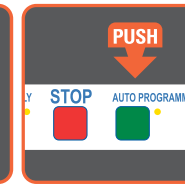
CONNECT Waste to Tap



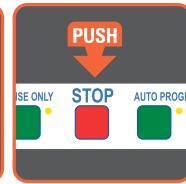
PLUG IN Waste



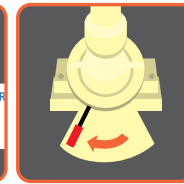
OPEN Check Valve to 'Clean'



Line Clean in Progress

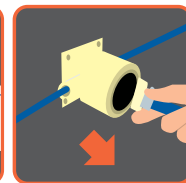
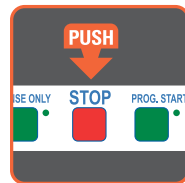


After the beep

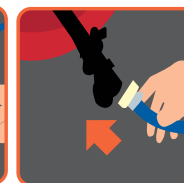


CLOSE Check Valve to 'Normal'

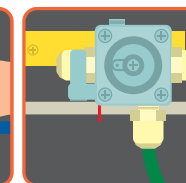
Back in the Cellar



DISCONNECT from BP Ringmain, store plain washer



RECONNECT coupling with filter washer

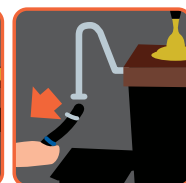


TURN ON Gas

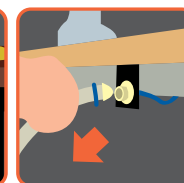
Finishing up at the Bar



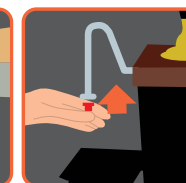
OPEN Tap until beer appears



DISCONNECT Waste from Tap



UNPLUG Waste and rinse pipe



REPLACE sparkler



Serve beer

